

# Education Research Centers

## *Meeting Your Needs for Texas Data*

Kristin Kuhne, Ph.D.

UT Dallas Education Research Center

[www.utdallas.edu/research/tsp-erc](http://www.utdallas.edu/research/tsp-erc)

---



# UT Dallas Education Research Center

**History**

**Organizational Structure**

**Data Warehousing**

Data Flows

Data Types

Data Access

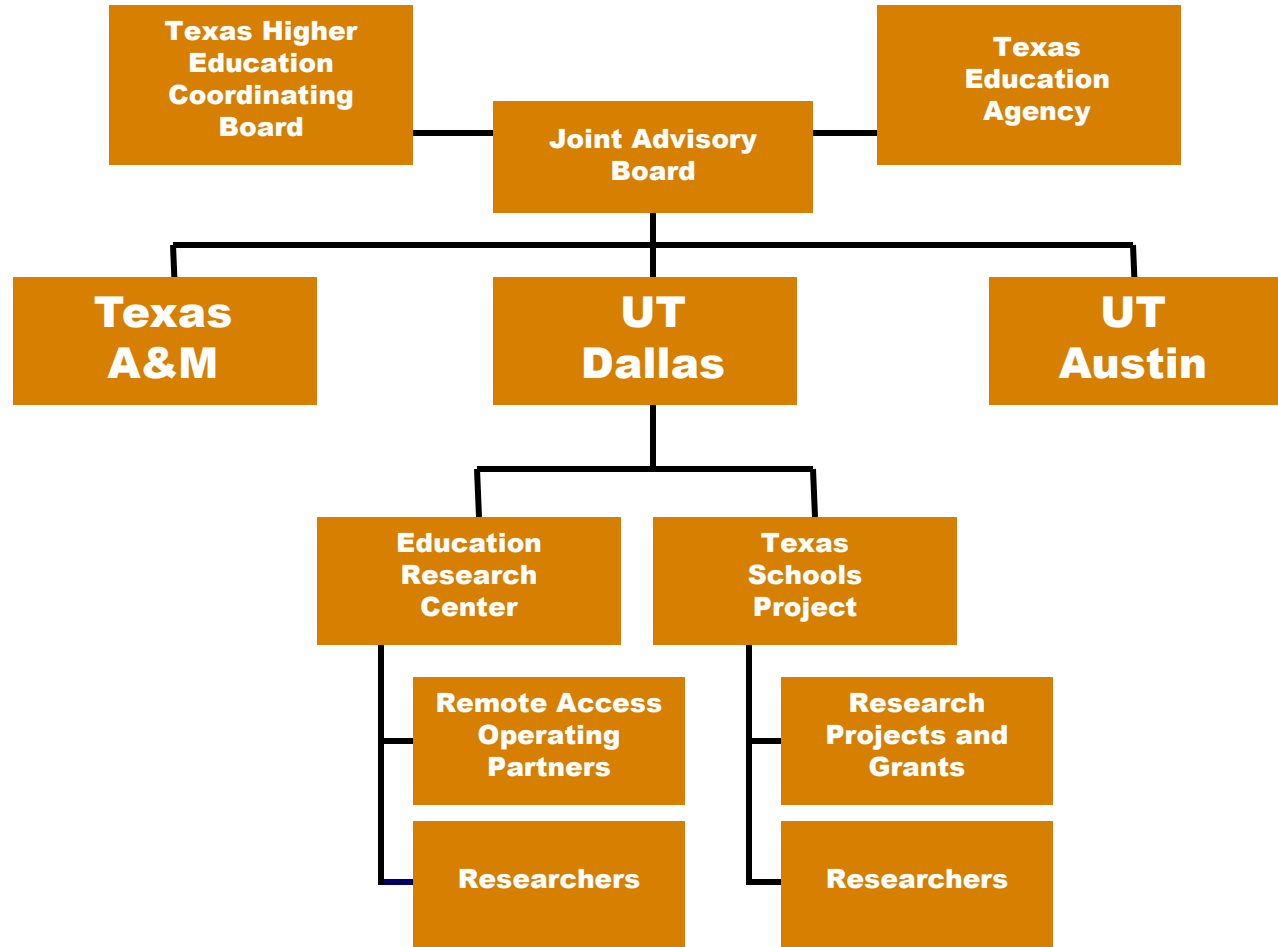
**Research Capabilities**

**Case Studies**

# Texas Schools Project to ERC

- Founded in 1992
- Research Focus
- Texas Education Agency Needs
  - Efficient provision of research data
  - Research capacity
- Legislative Intervention
- Department of Education Review
- UT Dallas Education Research Center

# Organizational Structure of the ERCs



# UTD-ERC Operating Partners

- Charles A. Dana Center
- Ray Marshall Center (RMC)
- National Center for Educational Achievement (NCEA)
- Institute for Demographic and Socioeconomic Research (IDSER at UT San Antonio)

# ERC Responsibilities

- Conduct research for the benefit of education in Texas
- Maintain ERC data and data security
- Conduct independent research
- Respond to public information requests
- Ensure ongoing funding

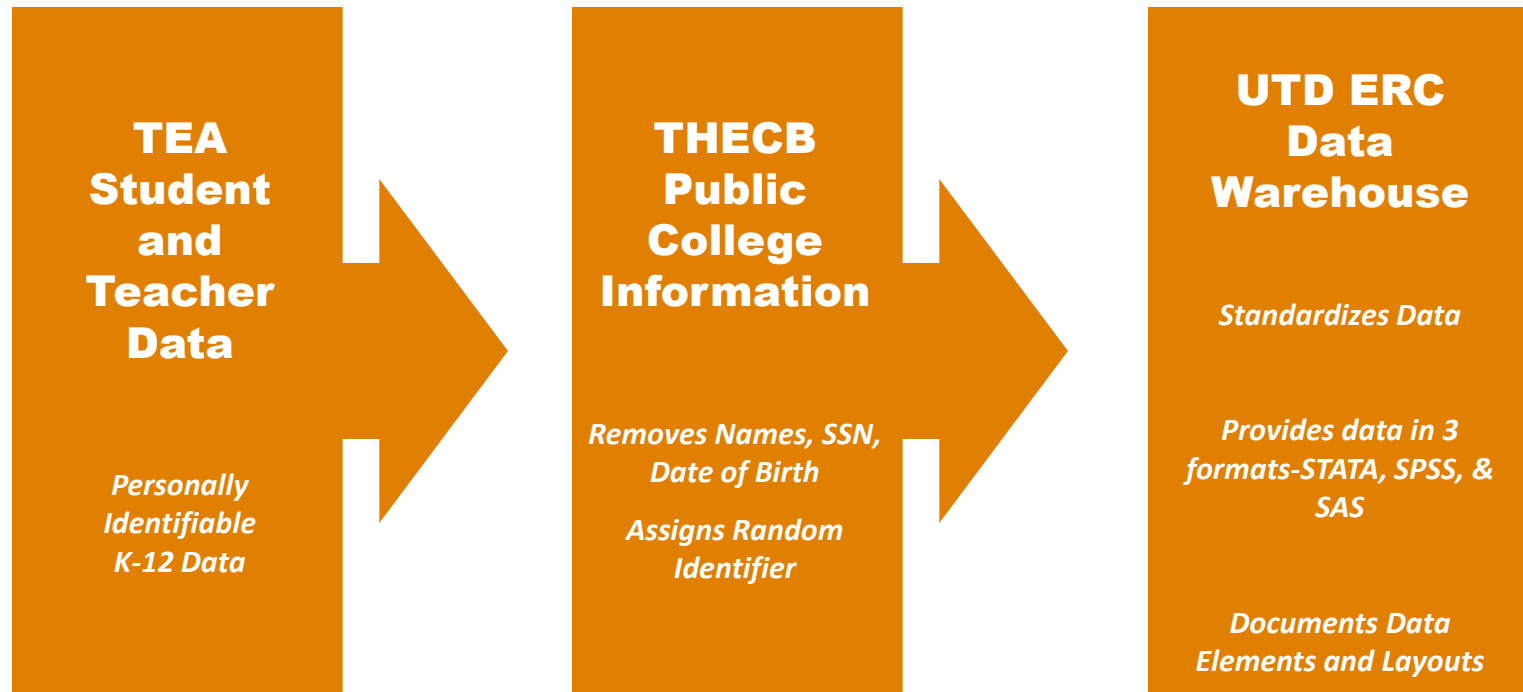
# Endorsement from US Department of Education - FPC

“In general, the *TEA and THECB* appear to have developed *a model approach* for the conduct of *independent education research* in accordance with *FERPA requirements*. It also appears that ERC data will prove *more valuable to researchers* than what is available under current practices because *longitudinal student information* can be made *available to the ERC’s* without having to address *confidentiality issues* associated with *small data cells*.

As such, we anticipate that the *ERC approach* will become the *preferred method* for conducting *longitudinal educational research* with *State education data*.”

Source: Letter from the Family Policy Compliance Office

# Data Provided by UTD-ERC



# Data Types

- **PEIMS – All Collections**
  - Student, Staff, Financial, Organization Records
- **Student Assessment**
  - TAAS and TAKS (RPTE, TELPAS, and SDAA coming)
- **SBEC – Teacher Certification Data**
- **THECB – Texas Public Higher Ed Data**
- **Pending Data Additions**
  - SAT/ACT, AP/IB, NSC, TWC, and others

# Accessing UTD-ERC Data

- UT Dallas, TSP offices
- Remote data access sites growing
- Project approval process
- Confidentiality Agreement a must
- Regular updates required
- All research products must meet FERPA compliance prior to release

# Research Capabilities

- In-house education research expertise
- Cray CX-1 supercomputing environment
- Net App storage: 4 TB of high-speed disk space
- Training in STATA, SAS, or SPSS statistical packages
- On-site or remote access through partners
- FERPA-compliant review process

# Two Current Projects

(of more than 20 approved)

## Infinity Project

*Analysis of the effect of a high-tech engineering curriculum on Texas high school students' academic achievement.*

- Data from 26 Texas schools districts involved

## Educational First Steps

*Assessment of the impact of participation in EFS-affiliated early childhood education centers on elementary school students' success.*

- Data from Dallas ISD

# Getting Access to UTD-ERC Data

- Step 1. Submit a full proposal
- Step 2. Internal review
- Step 3. JAB review and decision
- Step 4. Access set up

<http://www.utdallas.edu/research/tsp-erc/access.html>

# How can we help you?

- What are your research questions?
- How could you use this data?
- What can we do to help you?

***Your needs will help shape our future.***

# NEED MORE INFORMATION?

**Texas Schools Project - UT Dallas ERC**  
[utdallas.edu/research/tsp-erc](http://utdallas.edu/research/tsp-erc)

*Kristin Kuhne*  
*972-883-5487*  
*kuhne@utdallas.edu*

